

*A Statistical Report on*

**CHILD ABUSE AND NEGLECT  
IN HAWAII**

**2013**

**Prepared by**

**State of Hawaii**

**Department of Human Services**

**Audit, Quality Control and Research Office**

## TABLE OF CONTENTS

### LIST OF TABLES

Summary	1
Duplicated Count of Children by County: Reported and Confirmed, 2009 - 2013	4
Abuse and Neglect Types By County, Duplicated Count of Types for Each Child	5
Abuse and Neglect Types By County, Unduplicated Count of Types for Each Child	6
Unduplicated Count of Children by County District	7
Duplicated Count of Children by County Districts, 2009 - 2013	8
Duplicated Count of Children by Source of Initial Reporter, 2009 - 2013	9
Age of Confirmed Duplicated Count of Children, 2009 - 2013	11
Sex of Confirmed Duplicated Count of Children, 2009 - 2013	11
Race of Confirmed Duplicated Count of Children, 2009 - 2013	12
Severity of Harm of Confirmed Duplicated Count of Children, 2009 - 2013	12
Age, Sex, and Race of Confirmed Unduplicated Children	13
Recurrence Rate	14
Perpetrators of Confirmed Victims: Age and Sex	17
Perpetrator Relationship to Victim, 2009 - 2013	18
Age of Perpetrator, 2009 - 2013	18
Sex of Perpetrator, 2009 - 2013	18

### LIST OF FIGURES

Duplicated Count of Children, 2009 - 2013	2
Percentage of Duplicated Count of Children by County	3
Duplicated Count of Children by County: Reported and Confirmed, 2009 - 2013	4
Duplicated Count of Children by Source of Initial Reporter	10
Age and Sex of Perpetrators of Confirmed Duplicated Count of Children	15
Perpetrator Relationship to Victim	16

### MILITARY

Duplicated Count of Children by Military Branch and Rank, 2009 - 2013	19
Duplicated Count of Children by Source of Initial Reporter, 2009 - 2013	20
Age of Confirmed Duplicated Count of Children, 2009 - 2013	21
Sex of Confirmed Duplicated Count of Children, 2009 - 2013	21
Race of Confirmed Duplicated Count of Children, 2009 - 2013	22
Severity of Harm of Confirmed Duplicated Count of Children, 2009 - 2013	22

## CHILD ABUSE AND NEGLECT IN HAWAII, 2013 SUMMARY

	HAWAII	OAHU	KAUAI	MAUI	TOTAL
<b>INTAKES</b>					
Confirmed	157	451	58	120	786
Not Confirmed	261	866	78	179	1,384
Total Reported	418	1,317	136	299	2,170
Percent Confirmed	38%	34%	43%	40%	36%
 <b>DUPLICATED COUNT OF CHILDREN</b>					
Confirmed	284	761	81	203	1,329
Not Confirmed	495	1,475	141	312	2,423
Total Reported	779	2,236	222	515	3,752
Percent Confirmed	36%	34%	36%	39%	35%
 <b>UNDUPLICATED COUNT OF CHILDREN</b>					
Confirmed	280	753	80	202	1,315
Not Confirmed	454	1,380	136	300	2,270
Total Reported	734	2,133	216	502	3,585
Percent Confirmed	38%	35%	37%	40%	37%

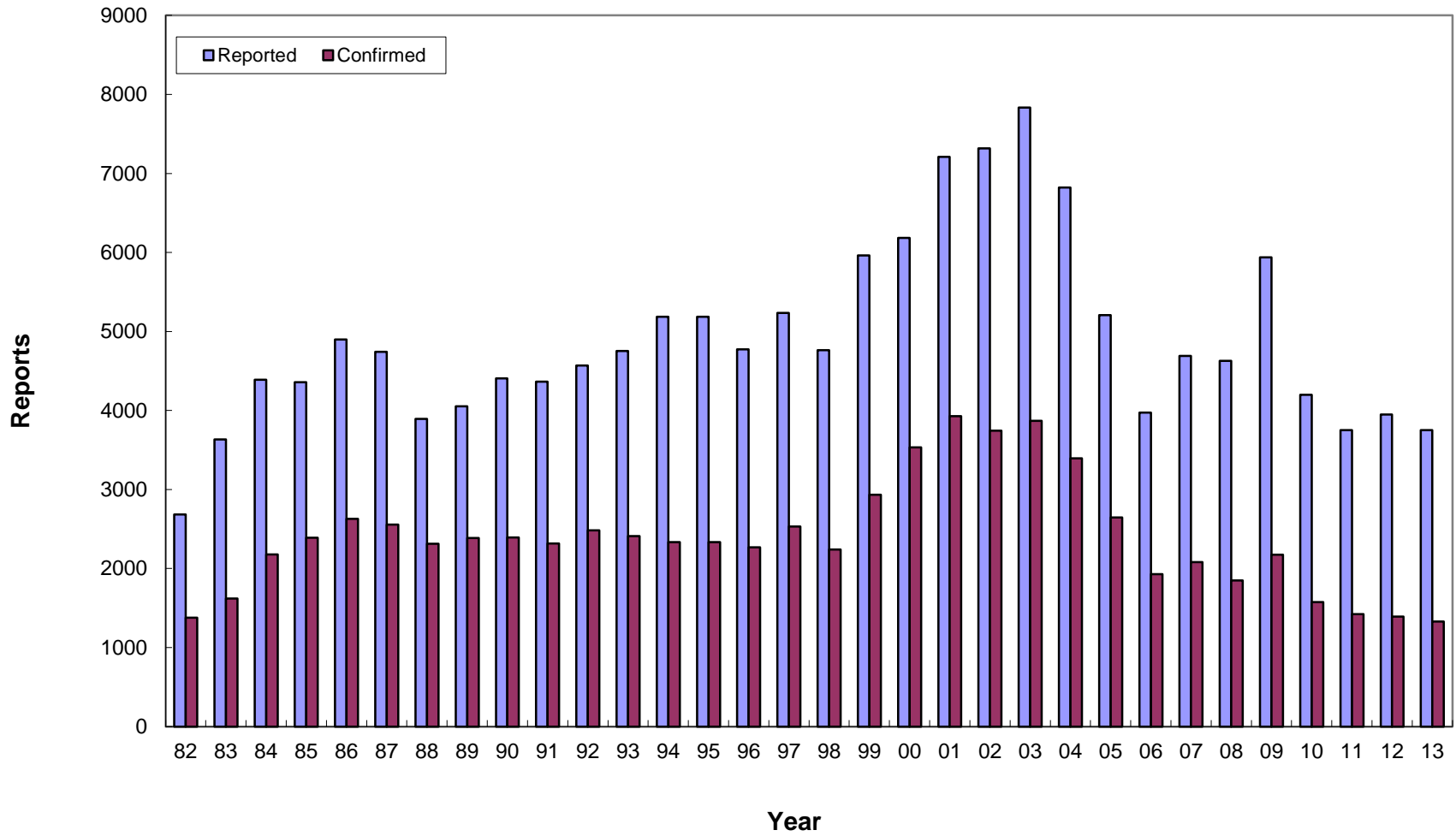
**Intakes:** reports accepted for investigation.

**Duplicated count:** counted by reports, a child is counted each time that he/she was found to be a victim. A child may be counted more than once during the reporting period.

**Unduplicated count:** counted by child, a child is counted only once during the reporting period, regardless of how many times the child was reported.

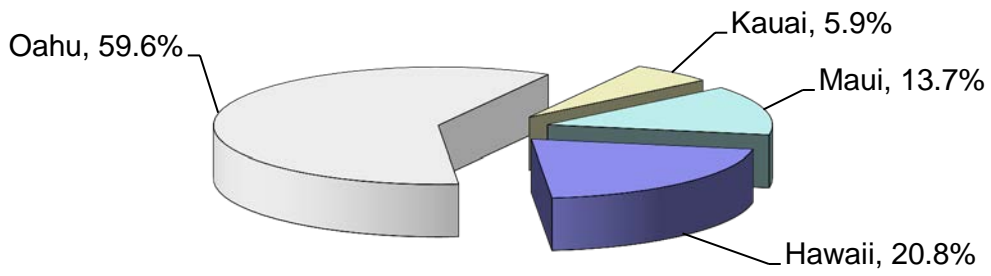
**Note:** In this report, data from 1999 and before were based on report date, data from 2000 and after were based on disposition date.

**CHILD ABUSE AND NEGLECT IN HAWAII, 1982-2013**  
**Duplicated Count of Children**

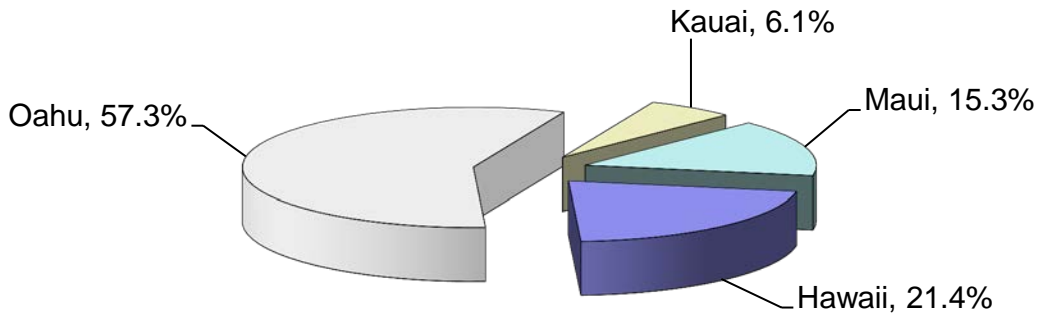


# CHILD ABUSE AND NEGLECT IN HAWAII, 2013

## Total Count of Children



## Total Count of Children

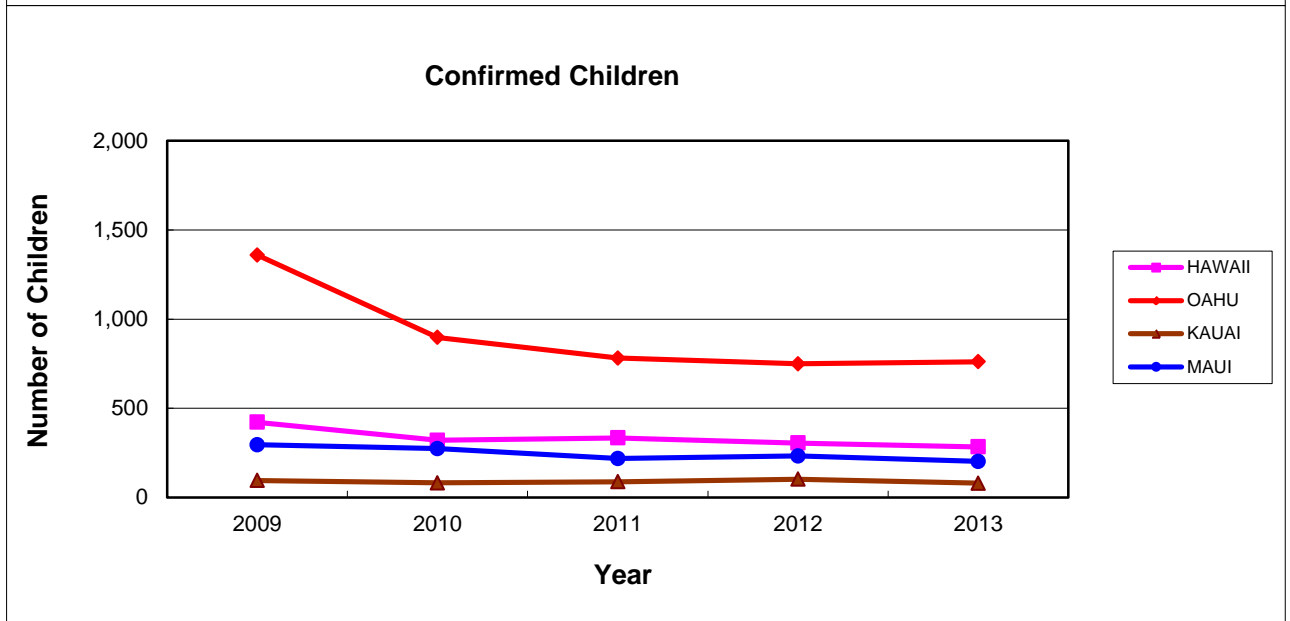
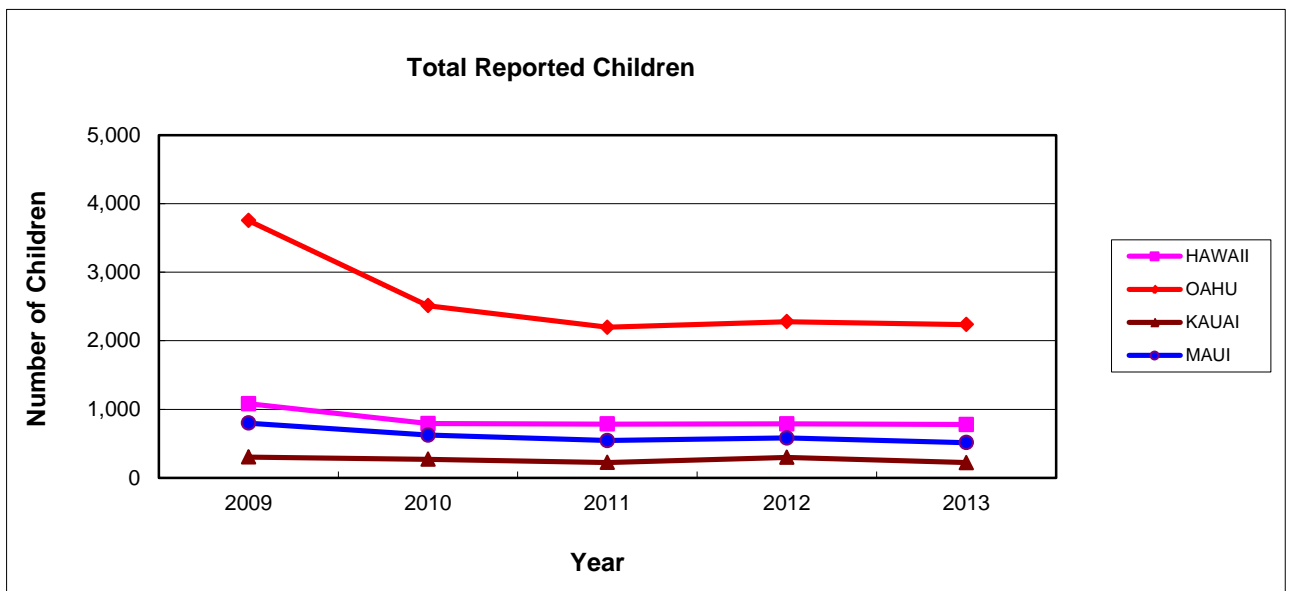


## Count of Confirmed Children

## CHILD ABUSE AND NEGLECT IN HAWAII, 2009-2013

### Duplicated Count of Children by County

County	REPORTED					CONFIRMED				
	2009	2010	2011	2012	2013	2009	2010	2011	2012	2013
HAWAII	1,081	793	786	787	779	422	321	334	306	284
OAHU	3,753	2,512	2,196	2,278	2,236	1,360	898	782	750	761
KAUAI	305	271	225	300	222	96	82	89	103	81
MAUI	800	623	544	583	515	296	274	219	233	203
<b>STATE</b>	<b>5,939</b>	<b>4,199</b>	<b>3,751</b>	<b>3,948</b>	<b>3,752</b>	<b>2,174</b>	<b>1,575</b>	<b>1,424</b>	<b>1,392</b>	<b>1,329</b>



## CHILD ABUSE AND NEGLECT IN HAWAII, 2013

### ABUSE AND NEGLECT TYPES BY COUNTY

#### DUPLICATED COUNT OF TYPES FOR EACH CHILD\*

<b>Total Reported:</b>	<b>HAWAII</b>	<b>OAHU</b>	<b>KAUAI</b>	<b>MAUI</b>	<b>Total</b>
Physical Abuse	144	391	33	64	632
Neglect	180	492	50	77	799
Medical Neglect	14	35	8	14	71
Sexual Abuse	43	132	10	19	204
Psychological Abuse	2	35	2	3	42
Threatened Harm	633	1,725	187	434	2,979
<b>Total</b>	<b>1,016</b>	<b>2,810</b>	<b>290</b>	<b>611</b>	<b>4,727</b>

#### **Confirmed:**

Physical Abuse	35	83	11	22	151
Neglect	40	138	10	26	214
Medical Neglect	6	12	3	2	23
Sexual Abuse	10	41	4	7	62
Psychological Abuse	0	14	0	1	15
Threatened Harm	237	596	64	170	1,067
<b>Total</b>	<b>328</b>	<b>884</b>	<b>92</b>	<b>228</b>	<b>1,532</b>

#### **Confirmation Rate by Type**

Physical Abuse	24%	21%	33%	34%	24%
Neglect	22%	28%	20%	34%	27%
Medical Neglect	43%	34%	38%	14%	32%
Sexual Abuse	23%	31%	40%	37%	30%
Psychological Abuse	0%	40%	0%	33%	36%
Threatened Harm	37%	35%	34%	39%	36%
<b>Total</b>	<b>32%</b>	<b>31%</b>	<b>32%</b>	<b>37%</b>	<b>32%</b>

\* A child may have more than one type of abuse/neglect per report and may have been reported more than once within the reporting period. Therefore, the sum of the abuse/neglect types exceeds the count of children.

## CHILD ABUSE AND NEGLECT IN HAWAII, 2013

### ABUSE AND NEGLECT TYPES BY COUNTY

#### UNDUPLICATED COUNT OF TYPES FOR EACH CHILD\*

#### Total Reported:

	HAWAII	OAHU	KAUAI	MAUI	Total
Physical Abuse	137	383	33	64	617
Neglect	179	484	50	75	788
Medical Neglect	13	35	8	14	70
Sexual Abuse	42	129	10	18	199
Psychological Abuse	2	35	2	3	42
Threatened Harm	607	1,664	182	426	2,879
<b>Total</b>	<b>980</b>	<b>2,730</b>	<b>285</b>	<b>600</b>	<b>4,595</b>

#### Confirmed:

Physical Abuse	35	81	11	22	149
Neglect	40	138	10	26	214
Medical Neglect	6	12	3	2	23
Sexual Abuse	10	41	4	7	62
Psychological Abuse	0	14	0	1	15
Threatened Harm	235	589	63	170	1,057
<b>Total</b>	<b>326</b>	<b>875</b>	<b>91</b>	<b>228</b>	<b>1,520</b>

#### Confirmation Rate by Type

Physical Abuse	26%	21%	33%	34%	24%
Neglect	22%	29%	20%	35%	27%
Medical Neglect	46%	34%	38%	14%	33%
Sexual Abuse	24%	32%	40%	39%	31%
Psychological Abuse	0%	40%	0%	33%	36%
Threatened Harm	39%	35%	35%	40%	37%
<b>Total</b>	<b>33%</b>	<b>32%</b>	<b>32%</b>	<b>38%</b>	<b>33%</b>

\* A child may have more than one type of abuse/neglect per report and may have been reported more than once during the reporting period, but the same maltreatment was counted only once . Therefore, the sum of the abuse/neglect types exceeds the count of children.



## CHILD ABUSE AND NEGLECT IN HAWAII, 2013

### NUMBER OF UNDUPLICATED CHILDREN BY DISTRICT

	CONFIRMED	NOT CONFIRMED	TOTAL
<b>HAWAII</b>			
N. Hilo	0	1	1
S. Hilo	87	115	202
Puna	116	184	300
Kau	2	15	17
S. Kona	3	12	15
N. Kona	9	15	24
S. Kohala	3	1	4
N. Kohala	3	2	5
Hamakua	2	7	9
Unspecified	55	102	157
<b>Total</b>	<b>280</b>	<b>454</b>	<b>734</b>
<b>OAHU</b>			
Honolulu	206	331	537
Ewa	173	380	553
Wahiawa	65	79	144
Waianae	140	243	383
Waialua	19	16	35
Koolauloa	20	24	44
Koolaupoko	52	158	210
Unspecified	78	149	227
<b>Total</b>	<b>753</b>	<b>1,380</b>	<b>2,133</b>
<b>KAUAI</b>			
Lihue	12	11	23
Koloa	5	12	17
Waimea	5	28	33
Hanalei	1	8	9
Kawaihau	19	20	39
Unspecified	38	57	95
<b>Total</b>	<b>80</b>	<b>136</b>	<b>216</b>
<b>MAUI</b>			
Lahaina	5	13	18
Wailuku	81	67	148
Makawao	37	47	84
Hana	1	1	2
Molokai	17	17	34
Lanai	1	1	2
Unspecified	60	154	214
<b>Total</b>	<b>202</b>	<b>300</b>	<b>502</b>
<b>STATE TOTAL</b>	<b>1,315</b>	<b>2,270</b>	<b>3,585</b>

## CHILD ABUSE AND NEGLECT IN HAWAII, 2009-2013

### Duplicated Count of Children by County District

DISTRICT	REPORTED					CONFIRMED				
	2009	2010	2011	2012	2013	2009	2010	2011	2012	2013
<b>HAWAII COUNTY</b>	<b>1,081</b>	<b>793</b>	<b>786</b>	<b>787</b>	<b>779</b>	<b>422</b>	<b>321</b>	<b>334</b>	<b>306</b>	<b>284</b>
N. Hilo	2	10	2	0	1	2	7	0	0	0
S. Hilo	236	240	221	203	216	86	74	96	97	89
Puna	248	246	205	281	325	100	105	61	100	117
Kau	31	12	20	19	17	25	10	13	6	2
S. Kona	30	20	11	11	15	12	10	9	2	3
N. Kona	56	32	23	24	25	21	11	5	9	10
S. Kohala	29	8	11	15	4	10	7	3	4	3
N. Kohala	6	8	0	3	5	0	3	0	2	3
Hamakua	24	14	29	12	10	5	4	14	0	2
Unspecified	419	203	264	219	161	161	90	133	86	55
<b>OAHU</b>	<b>3,753</b>	<b>2,512</b>	<b>2,196</b>	<b>2,278</b>	<b>2,236</b>	<b>1,360</b>	<b>898</b>	<b>782</b>	<b>750</b>	<b>761</b>
Honolulu	1,022	700	530	639	564	348	267	181	234	206
Ewa	1,051	697	583	602	580	367	206	207	210	173
Wahiawa	368	227	173	205	153	146	81	60	60	69
Waianae	556	374	405	389	405	239	162	146	139	144
Waialua	67	52	40	34	35	15	24	17	9	19
Koolauloa	75	39	50	56	44	29	20	22	9	20
Koolaupoko	449	274	294	233	227	154	96	103	54	52
Unspecified	165	149	121	120	228	62	42	46	35	78
<b>KAUAI COUNTY</b>	<b>305</b>	<b>271</b>	<b>225</b>	<b>300</b>	<b>222</b>	<b>96</b>	<b>82</b>	<b>89</b>	<b>103</b>	<b>81</b>
Lihue	60	43	42	35	23	18	15	24	20	12
Koloa	28	40	36	36	18	10	10	13	19	5
Waimea	45	12	20	30	34	8	4	6	5	5
Hanalei	9	12	1	7	9	1	3	0	0	1
Kawaihau	59	47	22	49	41	26	14	11	14	20
Unspecified	104	117	104	143	97	33	36	35	45	38
<b>MAUI COUNTY</b>	<b>800</b>	<b>623</b>	<b>544</b>	<b>583</b>	<b>515</b>	<b>296</b>	<b>274</b>	<b>219</b>	<b>233</b>	<b>203</b>
Lahaina	65	32	36	54	19	24	17	22	23	5
Wailuku	285	250	206	153	151	117	122	85	70	81
Makawao	129	97	104	93	91	50	38	31	46	37
Hana	2	4	13	1	2	0	2	10	1	1
Molokai	38	23	31	29	34	9	15	19	12	17
Lanai	8	11	8	3	2	7	8	2	2	1
Unspecified	273	206	146	250	216	89	72	50	79	61
<b>STATE TOTAL</b>	<b>5,939</b>	<b>4,199</b>	<b>3,751</b>	<b>3,948</b>	<b>3,752</b>	<b>2,174</b>	<b>1,575</b>	<b>1,424</b>	<b>1,392</b>	<b>1,329</b>

## CHILD ABUSE AND NEGLECT IN HAWAII, 2009- 2013

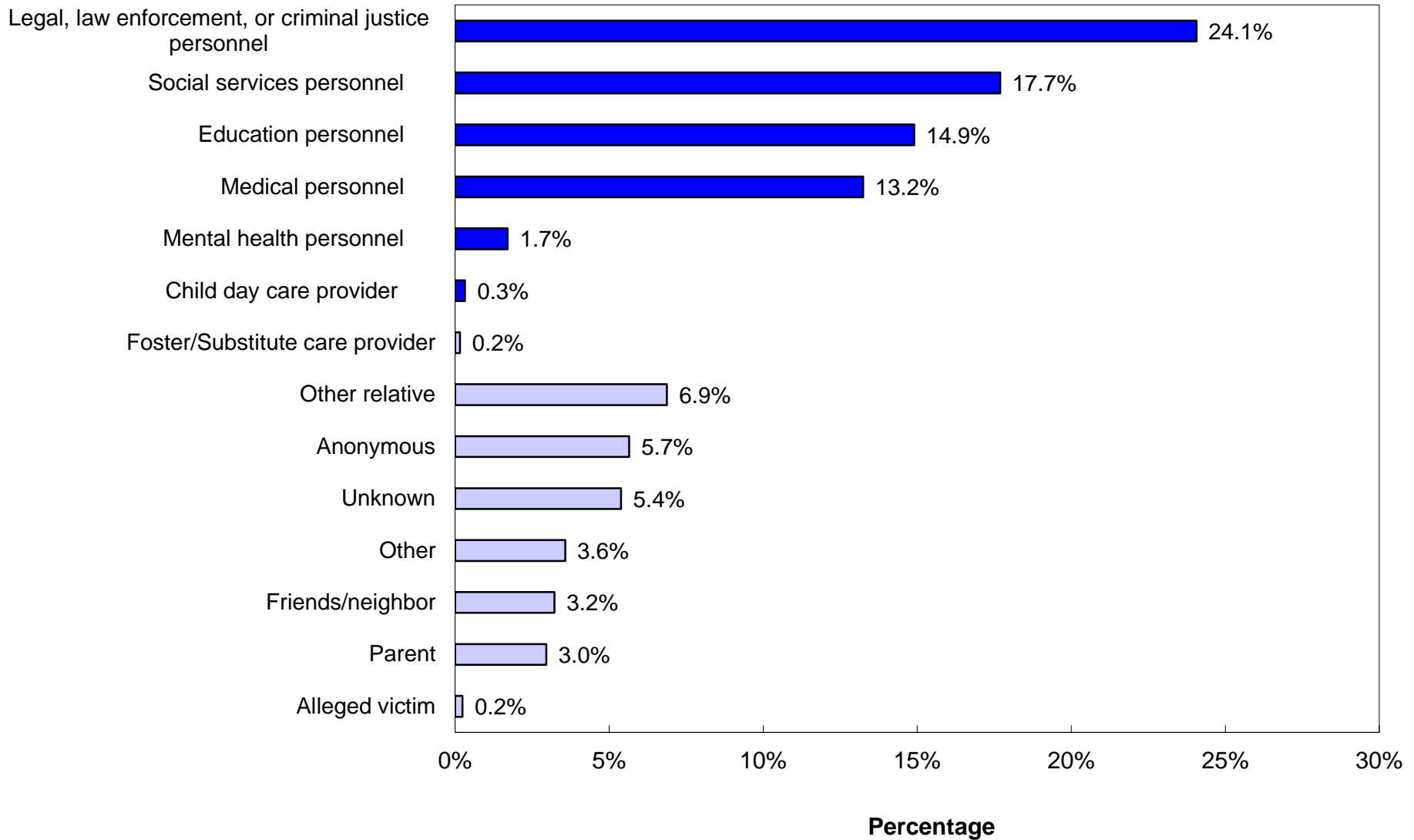
### Duplicated Count of Children by Source of Initial Reporter

SOURCE	REPORTED					CONFIRMED				
	2009	2010	2011	2012	2013	2009	2010	2011	2012	2013
<b>MANDATED REPORTERS</b>										
Social services personnel	898	699	631	734	664	387	312	254	239	196
Medical personnel	639	491	427	478	497	297	227	211	224	263
Mental health personnel	136	117	85	63	64	53	32	28	21	20
Legal, law enforcement, or criminal justice personnel	1709	1,120	1,024	1000	903	695	445	436	451	369
Education personnel	942	762	599	603	559	281	286	205	201	197
Child day care provider	15	15	13	6	12	4	3	3	2	3
Foster/Substitute care provider	7	2	1	2	6	2	1	0	0	1
<b>Total Mandatory Reporters</b>	<b>4,346</b>	<b>3,206</b>	<b>2,780</b>	<b>2,886</b>	<b>2,705</b>	<b>1,719</b>	<b>1,306</b>	<b>1,137</b>	<b>1,138</b>	<b>1,049</b>
<b>OTHER REPORTERS</b>										
Alleged victim	12	13	7	4	9	6	1	0	2	6
Parent	167	110	120	108	111	43	42	32	32	31
Other relative	372	234	275	315	258	122	80	97	89	81
Friends/neighbor	145	138	124	124	121	30	25	32	16	22
Anonymous	262	154	145	193	212	81	37	38	35	54
Other	208	113	141	154	134	61	30	45	46	32
Unknown	427	231	159	164	202	112	54	43	34	54
<b>Total Other Reporters</b>	<b>1,593</b>	<b>993</b>	<b>971</b>	<b>1,062</b>	<b>1,047</b>	<b>455</b>	<b>269</b>	<b>287</b>	<b>254</b>	<b>280</b>
<b>STATE TOTAL</b>	<b>5,939</b>	<b>4,199</b>	<b>3,751</b>	<b>3,948</b>	<b>3,752</b>	<b>2,174</b>	<b>1,575</b>	<b>1,424</b>	<b>1,392</b>	<b>1,329</b>

**CHILD ABUSE AND NEGLECT IN HAWAII, 2013**  
**Mandated and Non-Mandated Source of Initial Reporter**

**Sources**

 Mandated Sources  Non-Mandated Sources



**CHILD ABUSE AND NEGLECT IN HAWAII, 2009-2013  
VICTIM**

**CONFIRMED DUPLICATED COUNT OF CHILDREN**

<b>AGE</b>	<b>2009</b>	<b>2010</b>	<b>2011</b>	<b>2012</b>	<b>2013</b>
Less Than One Year	292	214	224	224	236
1 Year	182	96	116	97	98
2 Years	149	111	86	97	90
3 Years	125	113	108	93	79
4 Years	158	113	96	89	87
5 Years	126	86	104	91	83
6 Years	116	85	84	72	77
7 Years	105	80	62	73	59
8 Years	114	84	39	64	65
9 Years	89	73	54	52	58
10 Years	103	73	55	58	64
11 Years	97	66	43	56	46
12 Years	93	57	65	63	61
13 Years	92	75	63	82	51
14 Years	105	72	67	46	42
15 Years	86	66	55	49	40
16 Years	70	57	61	46	57
17 Years	71	51	38	39	29
Unknown	1	3	4	1	7
Median age	6	6	5	6	5
<b>TOTAL</b>	<b>2,174</b>	<b>1,575</b>	<b>1,424</b>	<b>1,392</b>	<b>1,329</b>
<b>SEX</b>	<b>2009</b>	<b>2010</b>	<b>2011</b>	<b>2012</b>	<b>2013</b>
Male	1,048	732	707	680	649
Female	1,123	839	712	709	676
Unknown	3	4	5	3	4
<b>TOTAL</b>	<b>2,174</b>	<b>1,575</b>	<b>1,424</b>	<b>1,392</b>	<b>1,329</b>

**CHILD ABUSE AND NEGLECT IN HAWAII, 2009-2013  
VICTIM**

**CONFIRMED DUPLICATED COUNT OF CHILDREN**

<b>RACE</b>	<b>2009</b>	<b>2010</b>	<b>2011</b>	<b>2012</b>	<b>2013</b>
Hawaiian/Part Hawaiian	856	613	582	607	567
Mixed	347	302	244	221	226
White	222	174	153	174	181
Filipino	169	76	89	124	87
Samoaan	54	36	32	32	45
Micronesia				32	24
Black	45	30	42	29	46
Japanese	17	10	20	21	18
Korean	6	3	2	1	3
American Indian	17	7	9	3	7
Chinese	14	10	6	3	8
Other Pacific Islander	106	45	45	24	14
Hispanic/Spanish	88	48	26	39	37
Vietnamese	3	1	6	11	1
Tongan	0	0	5	2	6
Laotian	3	2	1	6	0
Cambodian	1	0	0	1	0
Alaskan Native	1	0	0	0	0
Unable to Determine	50	62	50	53	54
Missing	175	156	112	9	5
<b>TOTAL</b>	<b>2,174</b>	<b>1,575</b>	<b>1,424</b>	<b>1,392</b>	<b>1,329</b>

<b>SEVERITY OF HARM</b>	<b>2009</b>	<b>2010</b>	<b>2011</b>	<b>2012</b>	<b>2013</b>
Fatal	5	0	4	1	6
Permanent disability	3	0	7	0	0
Serious	44	28	29	18	22
Treatment required	178	156	146	123	135
No treatment necessary	959	725	685	623	567
No injury	985	666	553	627	599
<b>TOTAL</b>	<b>2,174</b>	<b>1,575</b>	<b>1,424</b>	<b>1,392</b>	<b>1,329</b>

## CHILD ABUSE AND NEGLECT IN HAWAII, 2013 VICTIM

### CONFIRMED UNDUPLICATED COUNT OF CHILDREN\*: AGE, SEX, RACE, SEVERITY

AGE	Number	Percent	RACE	Number	Percent
Less Than One Year	235	17.9	MISSING	5	0.4
1 Year	95	7.2	American Indian	7	0.5
2 Years	89	6.8	Black	46	3.5
3 Years	76	5.8	Chinese	8	0.6
4 Years	85	6.5	Micronesia	24	1.8
5 Years	83	6.3	Filipino	87	6.6
6 Years	77	5.9	Hawaiian/Part Hawaiian	563	42.8
7 Years	59	4.5	Hispanic/Spanish	35	2.7
8 Years	64	4.9	Japanese	18	1.4
9 Years	57	4.3	Korean	3	0.2
10 Years	63	4.8	Mixed	221	16.8
11 Years	46	3.5	Other pacific islander	14	1.1
12 Years	61	4.6	Samoan	45	3.4
13 Years	51	3.9	Tongan	6	0.5
14 Years	42	3.2	Unable to determine	54	4.1
15 Years	39	3.0	Vietnamese	1	0.1
16 Years	57	4.3	White	178	13.54
17 Years	29	2.2			
Unknown	7	0.5			
<b>TOTAL</b>	<b>1,315</b>	<b>100.0</b>	<b>TOTAL</b>	<b>1,315</b>	<b>100.0</b>

SEX	Number	Percent	SEVERITY OF HARM	Number	Percent
Male	642	48.8	Fatal	6	0.5
Female	669	50.9	Serious	22	1.7
Unknown or missing	4	0.3	Treatment required	133	10.1
			No treatment necessary	561	42.7
			No injury	593	45.1
<b>TOTAL</b>	<b>1,315</b>	<b>100.0</b>	<b>TOTAL</b>	<b>1,315</b>	<b>100.0</b>

\*A child is only counted once, regardless of how many times he/she was reported.  
The highest severity level was selected for a child with more than one confirmed severity.

**CHILD ABUSE AND NEGLECT IN HAWAII, 2013**  
**Recurrence\***

	Frequency	Percent
<b>No Recurrence**</b>	675	99.85
<b>Recurrence***</b>	1	0.15
<b>Total</b>	<b>676</b>	<b>100.0</b>

\*Only confirmed child victims, whose report year and disposition year were both in 2013 and the initial maltreatment report date fell between January-June, 2013, were included in the recurrence rate calculation.

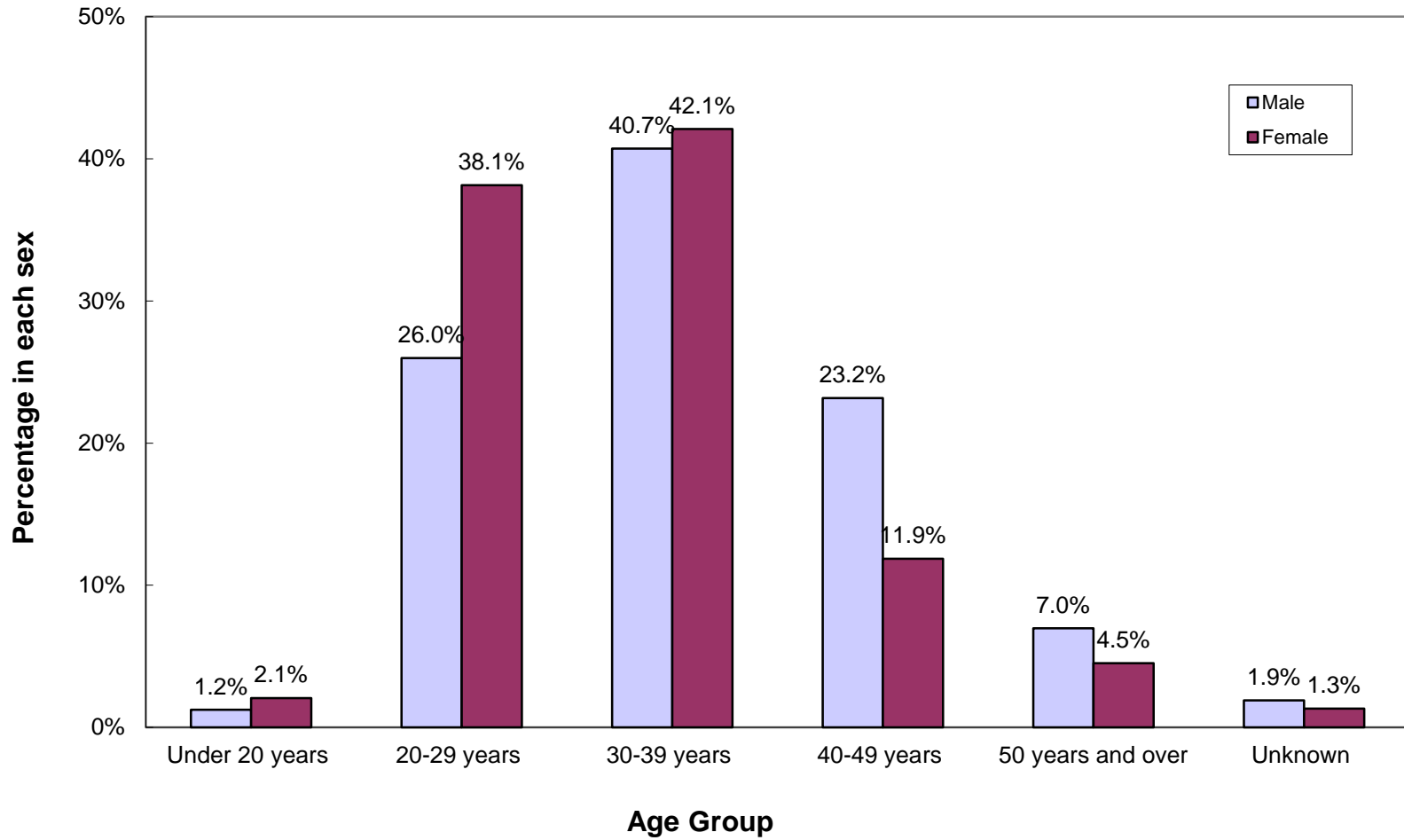
\*\*Maltreatment occurred between January and June. There was no recurrence within six months.

\*\*\*First maltreatment occurred between January and June. The second maltreatment occurred within six months.



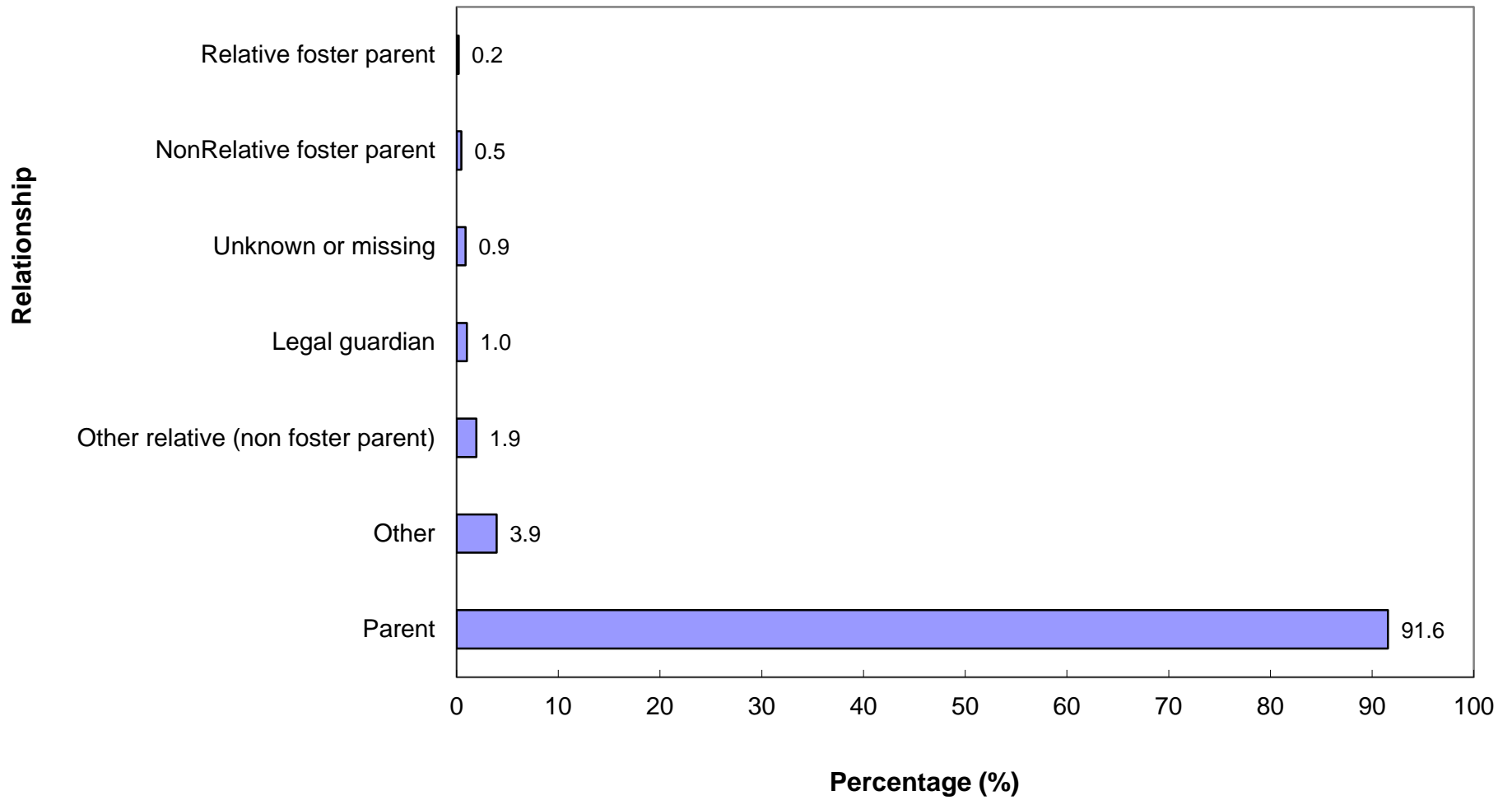
# CHILD ABUSE AND NEGLECT IN HAWAII, 2013

## Duplicated Count of Perpetrators: Age Group by Sex



# CHILD ABUSE AND NEGLECT IN HAWAII, 2013

## Relationship of Perpetrator to Confirmed Victim



## CHILD ABUSE AND NEGLECT IN HAWAII, 2013

### UNDUPLICATED PERPETRATORS FOR CONFIRMED VICTIMS\*

<b>AGE</b>	<b>Number</b>	<b>Percent</b>
Under 20 years	31	2.8
20-29 years	362	32.4
30-39 years	420	37.5
40-49 years	196	17.5
50 years and over	83	7.4
Unknown	27	2.4
<b>TOTAL</b>	<b>1,119</b>	<b>100.0</b>

<b>SEX</b>	<b>Number</b>	<b>Percent</b>
Male	494	44.2
Female	622	55.6
Unknown or missing	3	0.3
<b>TOTAL</b>	<b>1,119</b>	<b>100.0</b>

\* A perpetrator was counted only once regardless of how many times he/she was associated with a child victim.

**CHILD ABUSE AND NEGLECT IN HAWAII, 2009-2013**  
**PERPETRATORS OF CONFIRMED VICTIMS**  
**Duplicated Count of Perpetrators\***

<b>RELATIONSHIP TO VICTIM</b>	<b>2009</b>	<b>2010</b>	<b>2011</b>	<b>2012</b>	<b>2013</b>
Parent	2,922	2,101	1,844	1,839	1,790
Other relative	117	75	75	52	38
Relative foster parent	13	6	12	0	4
NonRelative Foster parent	13	17	5	1	9
Group home/Residential facility staff	0	0	0	1	0
Legal guardian	52	38	42	7	20
Other professionals	1	0	1	0	0
Foster parent, relationship unspecified	1	0	2	0	0
Other	160	157	119	110	77
Unknown/missing	30	7	5	3	17
<b>TOTAL</b>	<b>3,309</b>	<b>2,401</b>	<b>2,105</b>	<b>2,013</b>	<b>1,955</b>

<b>PERPETRATOR AGE</b>	<b>2009</b>	<b>2010</b>	<b>2011</b>	<b>2012</b>	<b>2013</b>
Under 20 Years	80	38	47	56	33
20 - 29 Years	1,015	795	719	652	636
30 - 39 Years	1,286	878	749	802	812
40 - 49 Years	615	445	368	339	333
50 Years or Older	263	210	165	131	110
Unknown	50	35	57	33	31
<b>TOTAL</b>	<b>3,309</b>	<b>2,401</b>	<b>2,105</b>	<b>2,013</b>	<b>1,955</b>

<b>PERPETRATOR SEX</b>	<b>2009</b>	<b>2010</b>	<b>2011</b>	<b>2012</b>	<b>2013</b>
Male	1511	1,153	1,005	963	889
Female	1785	1,240	1,094	1,046	1,062
Unknown	13	8	6	4	4
<b>TOTAL</b>	<b>3,309</b>	<b>2,401</b>	<b>2,105</b>	<b>2,013</b>	<b>1,955</b>

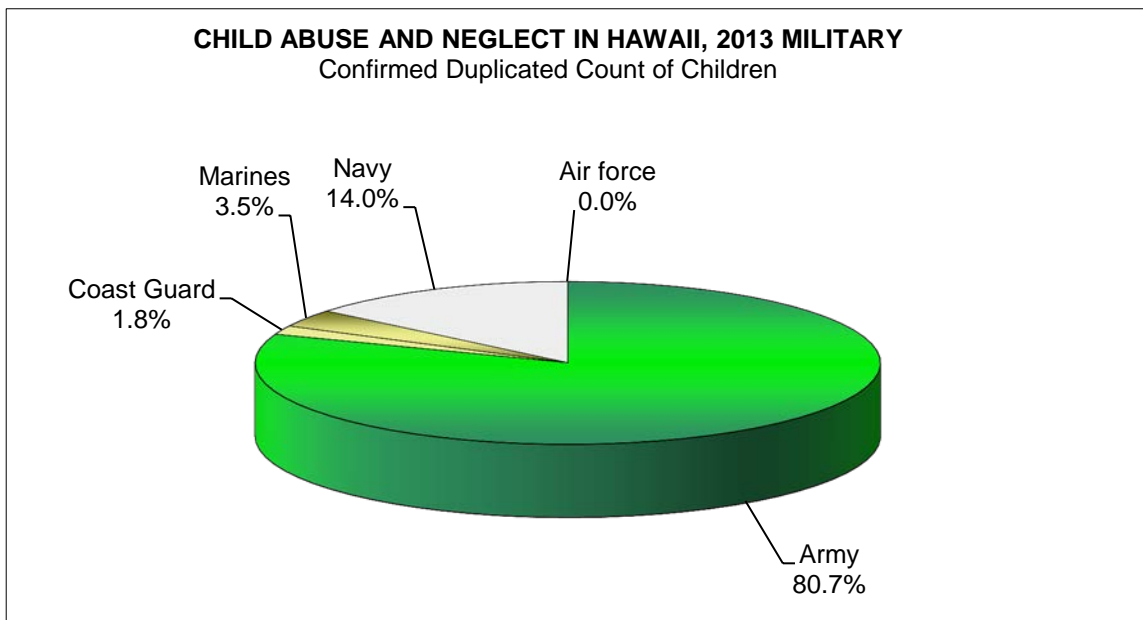
\*A perpetrator was counted each time that he/she was associated with a child victim, therefore one perpetrator may have been counted more than once. For example, if an intake had 2 confirmed victims and each victim had 2 perpetrators, then the count of perpetrators would be 4.

## CHILD ABUSE AND NEGLECT IN HAWAII, 2009-2013 MILITARY

### DUPLICATED COUNT OF CHILDREN

Military Branch	REPORTED					CONFIRMED				
	2009	2010	2011	2012	2013	2009	2010	2011	2012	2013
Air force	15	18	13	12	2	4	0	6	3	0
Army	201	148	110	140	124	63	35	42	30	46
Coast Guard	6	0	3	1	3	0	0	0	0	1
Marines	37	13	21	20	17	14	6	6	4	2
Navy	70	48	28	25	28	37	15	8	8	8
<b>State Total</b>	<b>329</b>	<b>227</b>	<b>175</b>	<b>198</b>	<b>174</b>	<b>118</b>	<b>56</b>	<b>62</b>	<b>45</b>	<b>57</b>

Military Rank	2009	2010	2011	2012	2013	2009	2010	2011	2012	2013
Unspecified	113	108	83	95	107	35	18	32	28	35
Enlisted	193	114	91	98	64	77	37	30	17	19
Non-Commissioned Officer	19	5	0	3	0	6	1	0	0	0
Officer	4	0	1	2	3	0	0	0	0	3
<b>State Total</b>	<b>329</b>	<b>227</b>	<b>175</b>	<b>198</b>	<b>174</b>	<b>118</b>	<b>56</b>	<b>62</b>	<b>45</b>	<b>57</b>



**CHILD ABUSE AND NEGLECT IN HAWAII, 2009-2013**  
**MILITARY**  
**Duplicated Count of Children by Source of Initial Reporter**

SOURCE	REPORTED					CONFIRMED				
	2009	2010	2011	2012	2013	2009	2010	2011	2012	2013
<b>MANDATED REPORTERS</b>										
Social services personnel	61	49	46	65	63	24	11	14	9	19
Medical personnel	36	43	33	36	14	13	13	10	11	3
Mental health personnel	7	4	1	3	1	5	1	0	1	0
Legal, law enforcement, or criminal justice personnel	99	49	44	51	34	32	12	24	20	13
Education personnel	48	34	16	24	19	17	15	9	3	6
Child day care provider	2	1	3	2	4	2	0	3	1	2
Substitute/Foster care provider	0	0	1	0	0	0	0	0	0	0
<b>Total Mandatory Reporters</b>	<b>253</b>	<b>180</b>	<b>144</b>	<b>181</b>	<b>135</b>	<b>93</b>	<b>52</b>	<b>60</b>	<b>45</b>	<b>43</b>
<b>OTHER REPORTERS</b>										
Alleged victim	0	0	0	0	0	0	0	0	0	0
Parent	7	5	5	0	7	1	0	0	0	1
Other relative	7	7	4	0	1	4	0	0	0	0
Friends/neighbor	12	2	4	7	8	6	1	0	0	4
Anonymous	30	11	9	0	13	11	0	1	0	7
Other	6	9	4	6	0	2	2	1	0	0
Unknown	14	13	5	4	10	1	1	0	0	2
<b>Total Other Reporters</b>	<b>76</b>	<b>47</b>	<b>31</b>	<b>17</b>	<b>39</b>	<b>25</b>	<b>4</b>	<b>2</b>	<b>0</b>	<b>14</b>
<b>STATE TOTAL</b>	<b>329</b>	<b>227</b>	<b>175</b>	<b>198</b>	<b>174</b>	<b>118</b>	<b>56</b>	<b>62</b>	<b>45</b>	<b>57</b>

**CHILD ABUSE AND NEGLECT IN HAWAII, 2009-2013**  
**MILITARY**

**CONFIRMED DUPLICATED COUNT OF CHILDREN: AGE AND SEX**

<b>AGE</b>	<b>2009</b>	<b>2010</b>	<b>2011</b>	<b>2012</b>	<b>2013</b>
Less Than One Year	16	9	11	4	10
1 Year	15	4	9	4	5
2 Years	9	9	6	4	5
3 Years	5	3	4	7	8
4 Years	12	5	7	4	5
5 Years	10	7	5	4	1
6 Years	3	1	1	3	4
7 Years	6	2	4	0	1
8 Years	5	1	0	1	2
9 Years	5	2	2	3	3
10 Years	3	2	5	0	2
11 Years	6	2	1	3	4
12 Years	4	1	2	0	2
13 Years	6	3	3	2	1
14 Years	3	0	1	2	1
15 Years	3	2	0	1	0
16 Years	3	2	1	1	3
17 Years	4	1	0	2	0
Unspecified	0	0	0	0	0
	<b>118</b>	<b>56</b>	<b>62</b>	<b>45</b>	<b>57</b>
<b>SEX</b>	<b>2009</b>	<b>2010</b>	<b>2011</b>	<b>2012</b>	<b>2013</b>
Male	50	25	32	13	27
Female	68	30	30	31	30
Unspecified	0	1	0	1	0
<b>STATE TOTAL</b>	<b>118</b>	<b>56</b>	<b>62</b>	<b>45</b>	<b>57</b>

**CHILD ABUSE AND NEGLECT IN HAWAII, 2009-2013**  
**MILITARY**

**CONFIRMED DUPLICATED COUNT OF CHILDREN: RACE AND SEVERITY**

<b>RACE</b>	<b>2009</b>	<b>2010</b>	<b>2011</b>	<b>2012</b>	<b>2013</b>
White	48	22	22	23	33
Black	23	12	14	6	10
Mixed	26	10	11	2	9
Filipino	0	0	1	1	0
Hawaiian/Part Hawaiian	1	0	0	1	3
Japanese	0	0	3	1	0
Mexican	0	0	0	0	0
Korean	0	0	0	0	0
Cambodian	0	0	0	0	0
Chinese	0	0	0	0	0
Puerto Rican	0	0	0	0	0
Other pacific islander	0	0	0	1	0
Samoan	0	0	0	0	0
Vietnamese	0	0	0	0	0
American Indian	4	0	0	0	0
Hispanic/Spanish	12	4	3	9	2
Other	0	0	0	0	0
Unable to determine	0	1	1	0	0
Unknown	4	7	7	1	0
<b>STATE TOTAL</b>	<b>118</b>	<b>56</b>	<b>62</b>	<b>45</b>	<b>57</b>

<b>SEVERITY</b>	<b>2009</b>	<b>2010</b>	<b>2011</b>	<b>2012</b>	<b>2013</b>
Fatal	2	0	1	0	0
Permanent Disability	0	0	1	0	0
Serious	0	5	3	0	0
Treatment Required	9	7	12	5	11
No Treatment Necessary	51	26	33	16	17
No Injury	56	18	12	24	29
Unspecified	0	0	0	0	0
<b>STATE TOTAL</b>	<b>118</b>	<b>56</b>	<b>62</b>	<b>45</b>	<b>57</b>